

# Claystone



## Welcome to lakeshore living

Claystone invites you to a life that balances small-town charm with the timeless luxury of lakeside living. Launching in 2025, this mid-rise condominium offers a prime location by the lake in one of Oakville's most desirable neighbourhoods, Bronte. Enjoy private rooftop terraces and a design that seamlessly blends with the unique character of Bronte Village—subtle, elegant, and unmistakably sophisticated.



## Project Highlights

### A Prime Lakeshore Address

2375 Lakeshore Rd W., Bronte, Oakville

### Building

Storeys..... 7  
Suites ..... 141  
Amenity Space ..... 6,000+ sq.ft.  
Retail Space..... 6,500 sq.ft.

### Suite Mix (471 – 1,800 sq.ft.)

1 Bed  
1 Bed + Den  
2 Bed  
2 Bed + Den  
3 Bed + Den

### Over 6,000 sq. ft. of Amenities

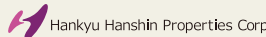
Lobby  
Fitness Studio  
Pet Wash  
Lounge (Indoor and Outdoor)  
Dining Room  
BBQ Area  
Parcel Storage  
Bike Storage & Repair  
Co-working Lounge

### Team

Builder &  
Developer



Developer  
Partner



Architect



Interior Design



Landscape  
Architect



## Unique Features

Boutique Residence

Prestigious South Oakville Location

Under a 6-min walk to Bronte Harbour  
& Bronte Heritage Waterfront Park

In the heart of Bronte Village

8-minute drive to Bronte GO Station

Select suites with water views

Exclusive resident-owned  
rooftop terraces

647.724.5001 | sales@graywoodgroup.com

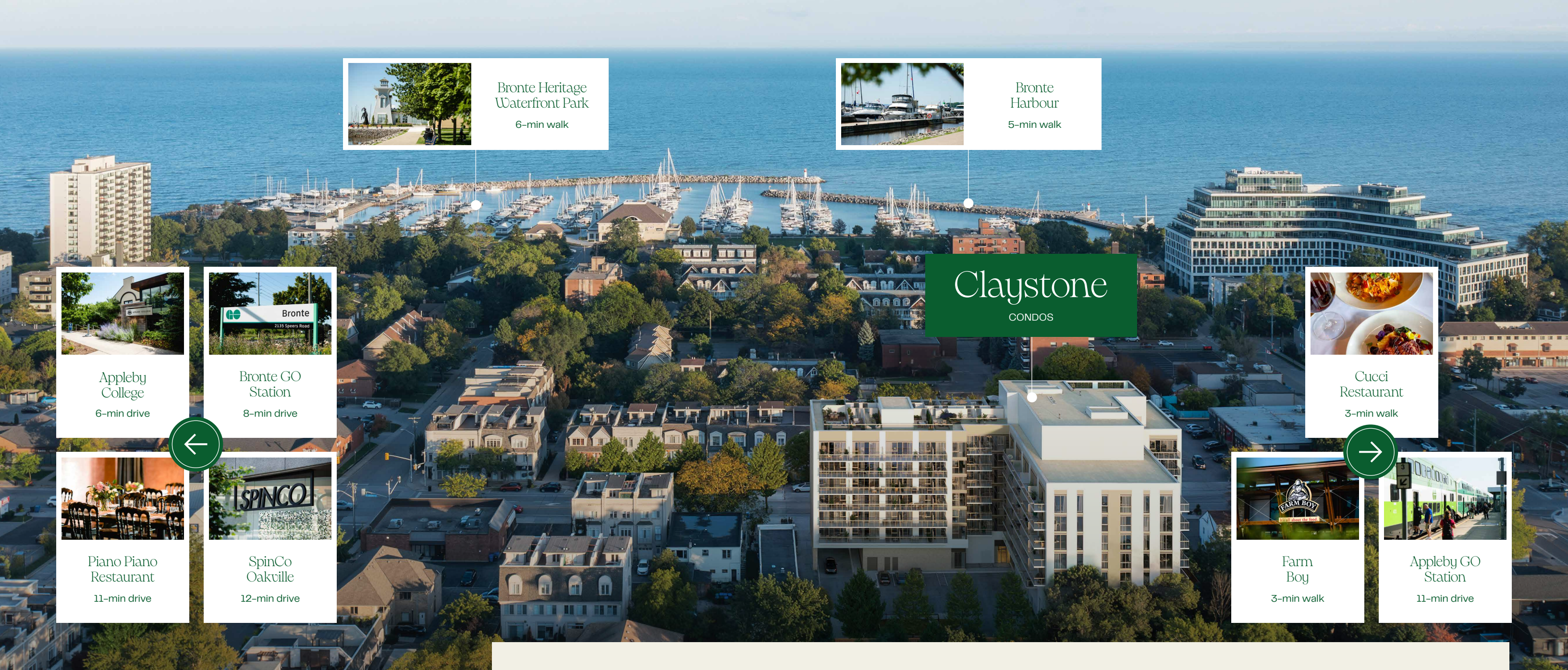
[claystonecondos.com](https://claystonecondos.com)

Follow us

@graywoodsales

All renderings are artistic depictions for illustrative purposes only. Travel times are estimates based on Google Maps and are subject to change due to traffic and other conditions. Specifications apply. See Sales Representative for full details. E. & O. E.





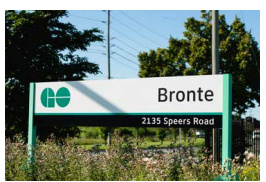
Bronte Heritage Waterfront Park  
6-min walk



Bronte Harbour  
5-min walk



Appleby College  
6-min drive



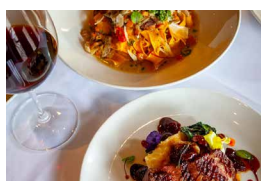
Bronte GO Station  
8-min drive



Piano Piano Restaurant  
11-min drive



SpinCo Oakville  
12-min drive



Cucci Restaurant  
3-min walk



Farm Boy  
3-min walk



Appleby GO Station  
11-min drive

# Claystone

CONDOS

## Convenience by the lake

Claystone Condos will offer a perfect blend of lakeside living and urban convenience. Just steps from Bronte Heritage Waterfront Park, residents can enjoy peaceful walks along the shoreline, with vibrant Bronte Harbour nearby, featuring charming boutiques and marina views. Commuters will benefit from the close proximity to Bronte GO Station and easy access to the QEW, ensuring seamless connections across the GTA. Oakville's top schools, including the prestigious Appleby College, provide exceptional co-educational programs that foster academic excellence and personal growth in a supportive environment.

### Walkable Amenities



- The Firehall Restaurant.....2-mins
- Farm Boy .....3-mins
- Rexall.....4-mins
- Plank Restobar .....5-mins
- Fisherman's Wharf .....7-mins
- Chestnut's Cafe .....7-mins

### World Class Education



- Oakville Christian School .....2-mins
- Appleby College.....6-mins
- MacLachlan College .....12-mins
- Walden International School.....15-mins
- Rotherglen School .....15-mins
- Chisholm Academy .....17-mins
- St. Mildred's-Lightbourn School ..17-mins
- Clanmore Montessori .....18-mins

### Notable Destinations



- Downtown Oakville.....10-mins
- Kerr Village .....10-mins
- Downtown Burlington.....10-mins
- Bronte Creek Provincial Park...10-mins
- Spencer's at the Waterfront....19-mins
- Burlington Beach.....19-mins
- Pearson International Airport...28-mins
- Downtown Toronto .....35-mins
- Niagara Falls .....50-mins

### Appleby GO Station Routes



- Brantford / Burlington**  
(Niagara Falls – Union Station)
- Lakeshore East & West**  
(Durham College – Niagara Falls)
- Express routes available via GO Transit