

METROSIDE 2

AT FISH CREEK EXCHANGE

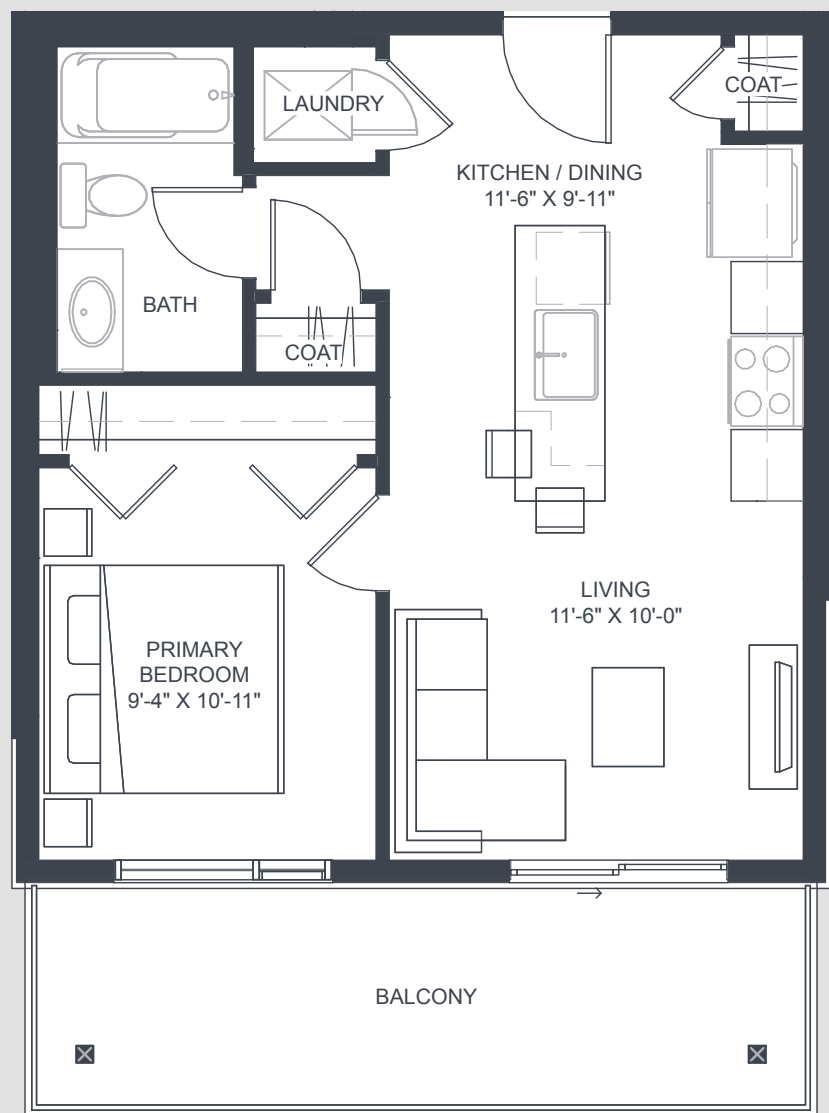
UNIT D

1 Bedroom

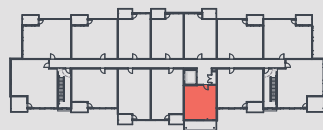
INTERIOR 527 Sq. Ft.

EXTERIOR 145 Sq. Ft.

TOTAL 672 Sq. Ft.



BUILDING 2



FLOORS 2-4



Dimensions, specifications, layouts and materials are approximate only and are subject to change without notice. Tile patterns may vary. Window size and location may vary. Actual usable floor space may vary from stated floor area. Balcony and terrace area is approximate and may vary in size floor to floor due to architectural detail. The purchaser acknowledges that the actual unit purchased may be a reverse layout to the plan shown. See Sales Representative for full details. E. & O. E.

METROSIDE 2

AT FISH CREEK EXCHANGE

UNIT B

2 Bedroom

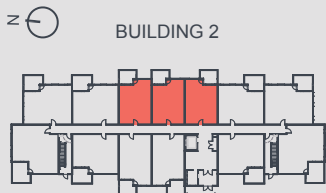
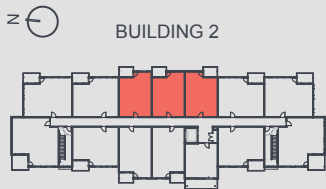
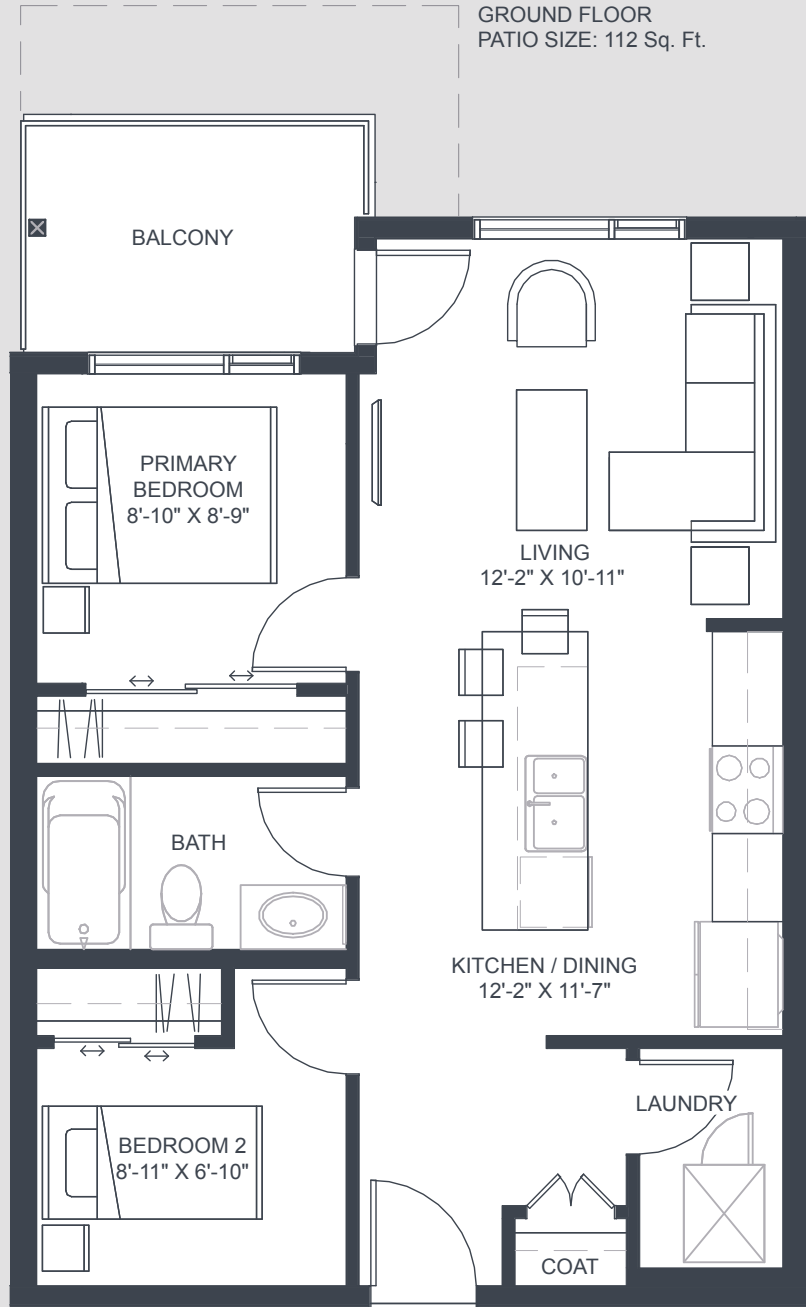
INTERIOR **638** Sq. Ft.

EXTERIOR **67** Sq. Ft.

TOTAL **705** Sq. Ft.

EXTENT TO GROUND FLOOR PATIO

GROUND FLOOR
PATIO SIZE: 112 Sq. Ft.



Dimensions, specifications, layouts and materials are approximate only and are subject to change without notice. Tile patterns may vary. Window size and location may vary. Actual usable floor space may vary from stated floor area. Balcony and terrace area is approximate and may vary in size floor to floor due to architectural detail. The purchaser acknowledges that the actual unit purchased may be a reverse layout to the plan shown. See Sales Representative for full details. E. & O. E.

METROSIDE 2

AT FISH CREEK EXCHANGE

UNIT C2

2 Bedroom

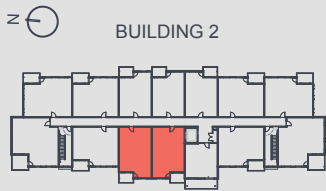
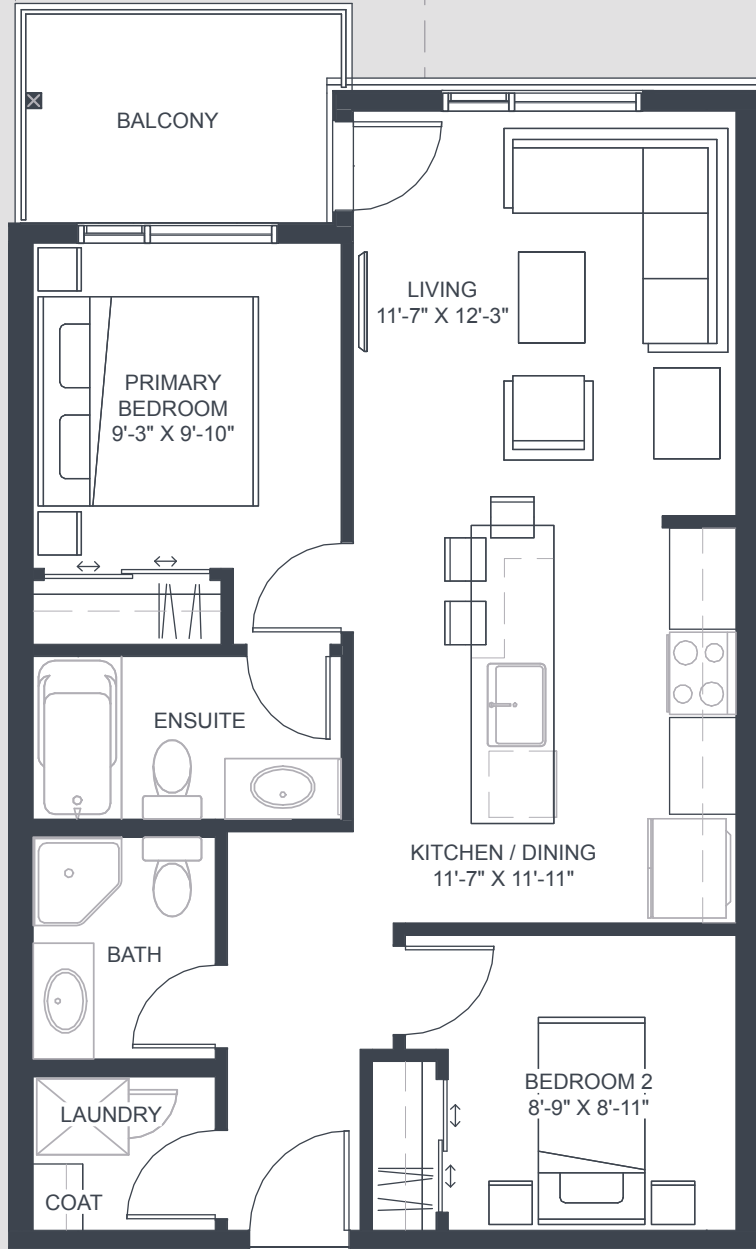
INTERIOR 732 Sq. Ft.

EXTERIOR 65 Sq. Ft.

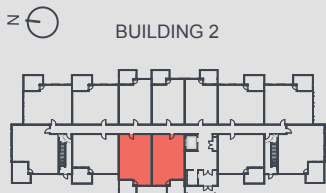
TOTAL 797 Sq. Ft.

EXTENT TO GROUND FLOOR PATIO

GROUND FLOOR
PATIO SIZE: 110 Sq. Ft.



FLOORS 2-4



GROUND FLOOR



Dimensions, specifications, layouts and materials are approximate only and are subject to change without notice. Tile patterns may vary. Window size and location may vary. Actual usable floor space may vary from stated floor area. Balcony and terrace area is approximate and may vary in size floor to floor due to architectural detail. The purchaser acknowledges that the actual unit purchased may be a reverse layout to the plan shown. See Sales Representative for full details. E. & O. E.

METROSIDE 2

AT FISH CREEK EXCHANGE

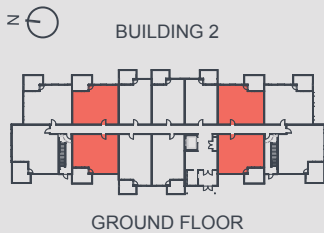
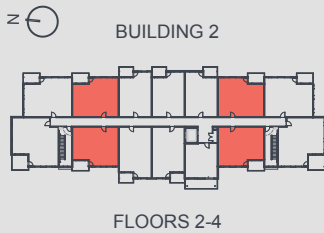
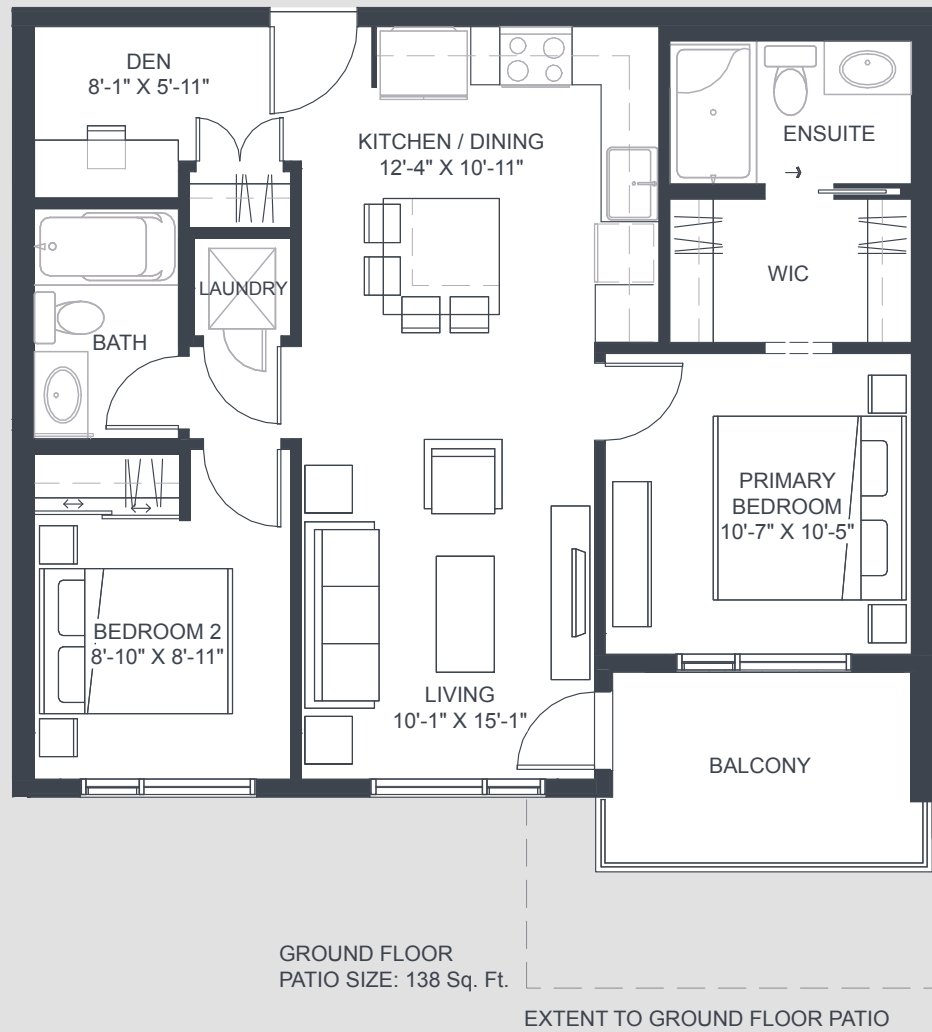
UNIT E

2 Bedroom + Den

INTERIOR 795 Sq. Ft.

EXTERIOR 79 Sq. Ft.

TOTAL 874 Sq. Ft.



Dimensions, specifications, layouts and materials are approximate only and are subject to change without notice. Tile patterns may vary. Window size and location may vary. Actual usable floor space may vary from stated floor area. Balcony and terrace area is approximate and may vary in size floor to floor due to architectural detail. The purchaser acknowledges that the actual unit purchased may be a reverse layout to the plan shown. See Sales Representative for full details. E. & O. E.

UNIT E2

2 Bedroom + Den

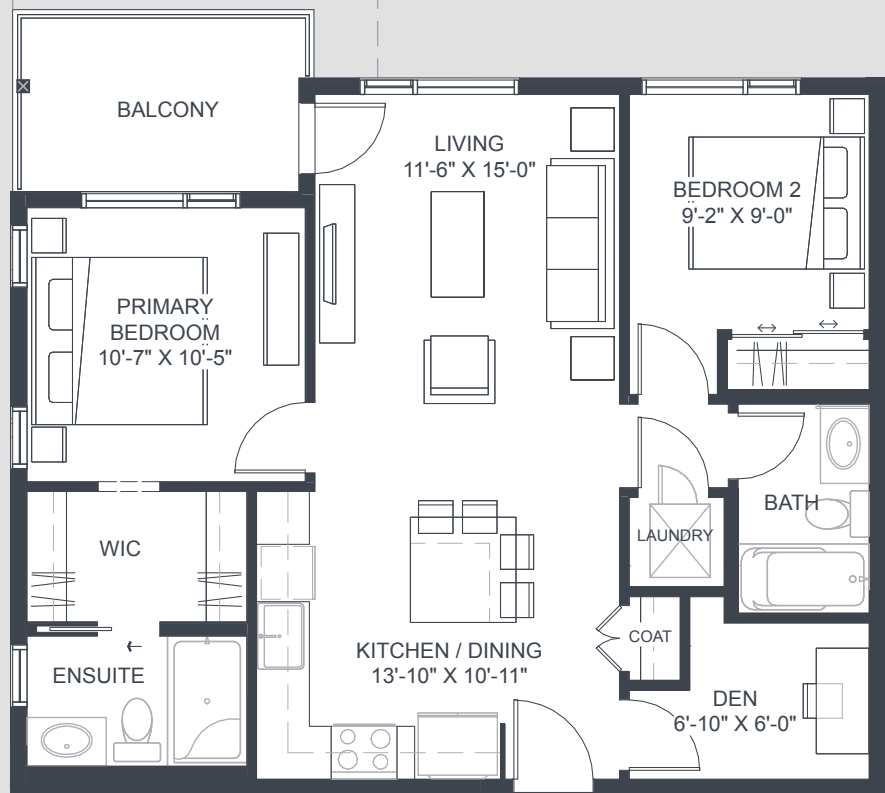
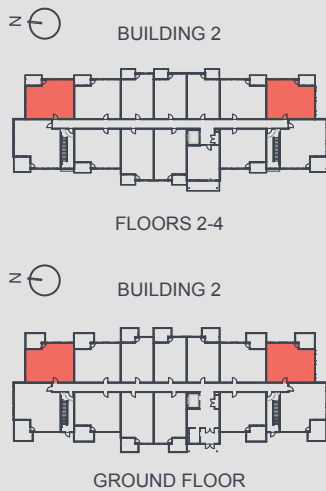
INTERIOR **839** Sq. Ft.

EXTERIOR **77** Sq. Ft.

TOTAL **916** Sq. Ft.

EXTENT TO GROUND FLOOR PATIO

GROUND FLOOR
PATIO SIZE: 137 Sq. Ft.



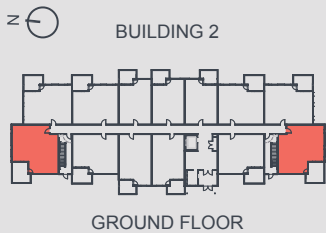
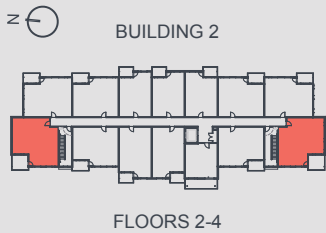
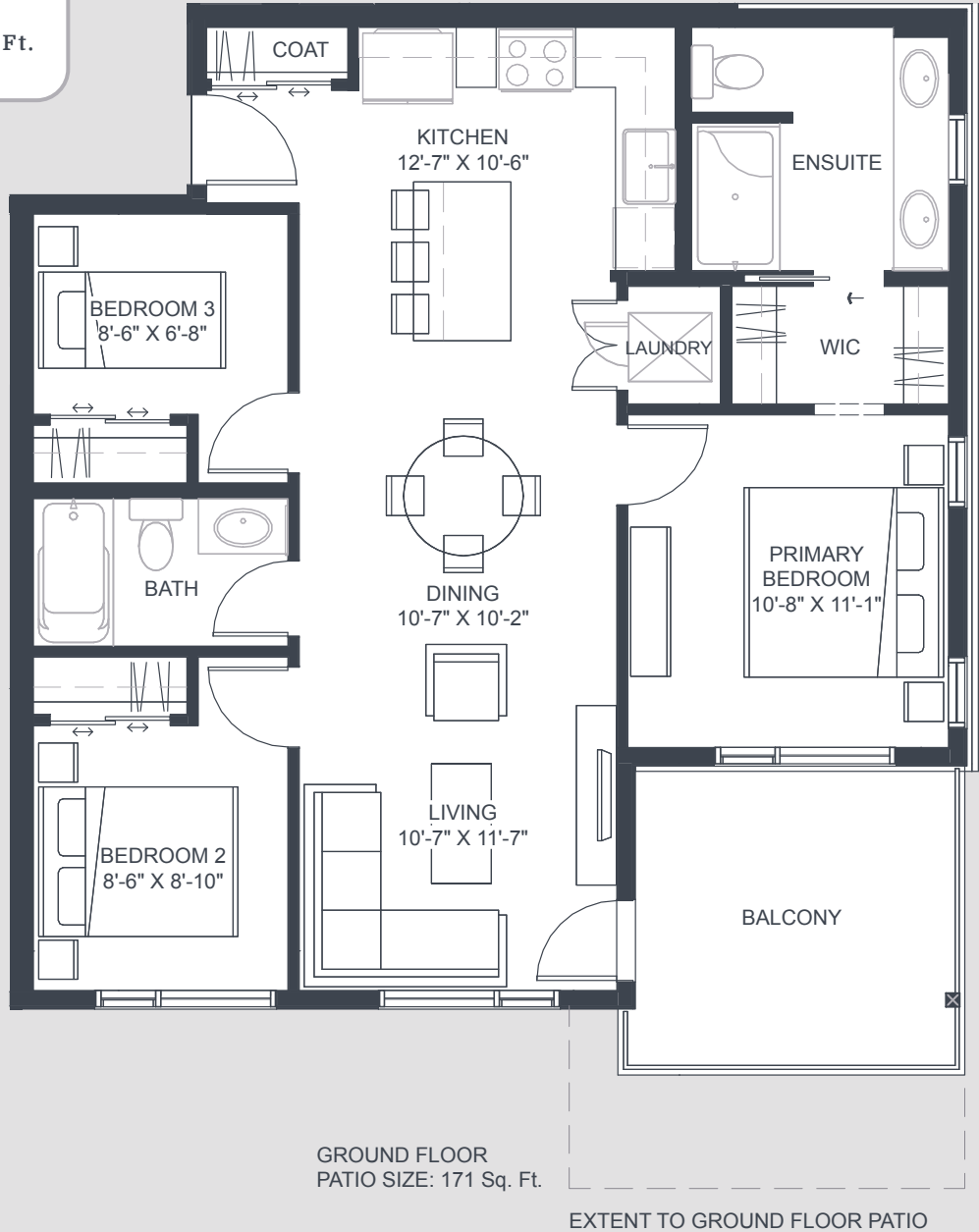
METROSIDE 2

AT FISH CREEK EXCHANGE

UNIT F

3 Bedroom

INTERIOR **922** Sq. Ft.
 EXTERIOR **116** Sq. Ft.
 TOTAL **1,038** Sq. Ft.



Dimensions, specifications, layouts and materials are approximate only and are subject to change without notice. Tile patterns may vary. Window size and location may vary. Actual usable floor space may vary from stated floor area. Balcony and terrace area is approximate and may vary in size floor to floor due to architectural detail. The purchaser acknowledges that the actual unit purchased may be a reverse layout to the plan shown. See Sales Representative for full details. E. & O. E.